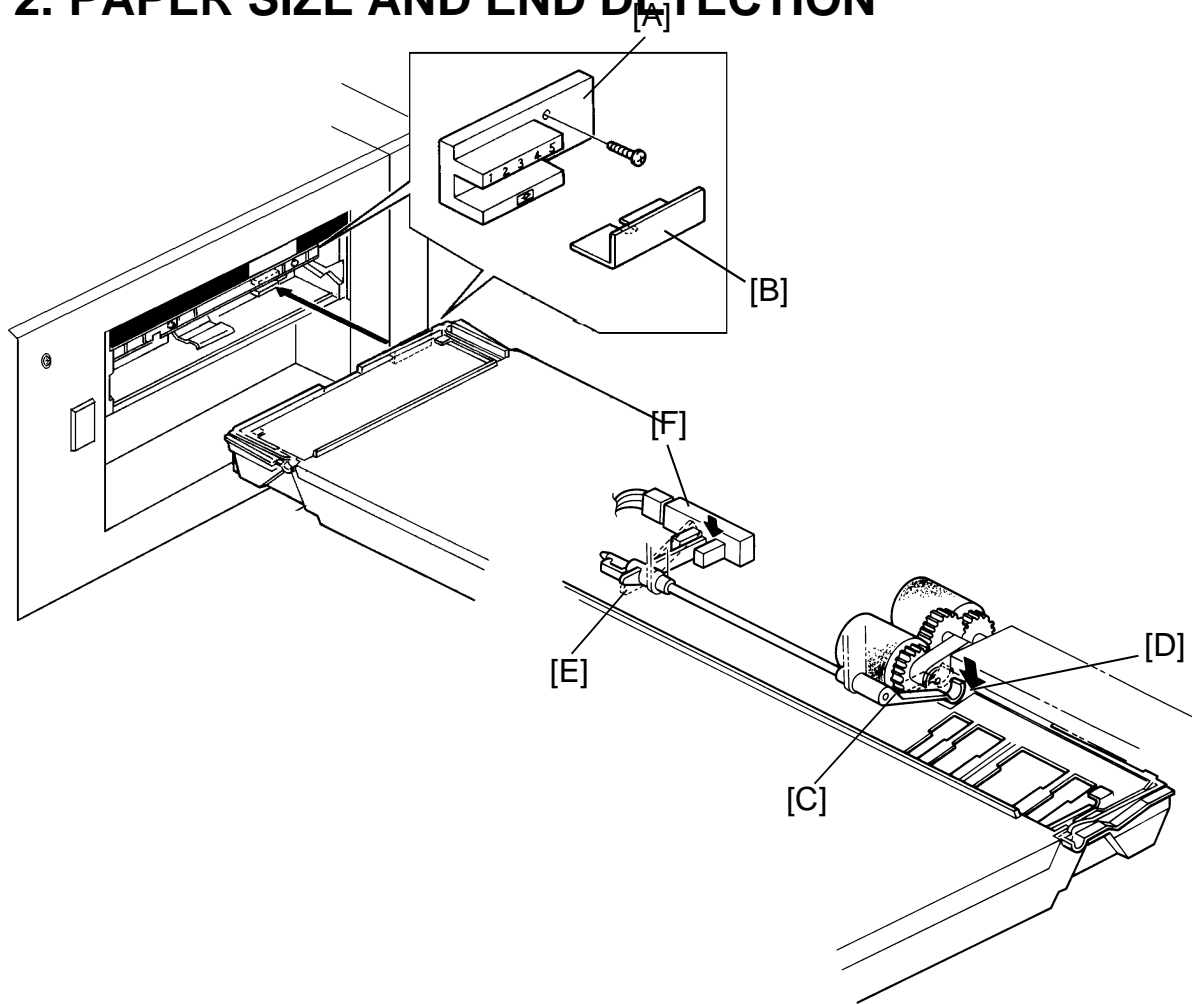


---

# 1. SPECIFICATIONS

Copy Paper Size:	Maximum A3 or 11" x 17" Minimum B5R or 5 1/2" x 8 1/2"
Copy Paper Weight:	Black or single color copies: 52 to 104g 14 to 281b Full color copies: 64 to 104g 17 to 281b
Paper Feed System:	Feed and reverse roller (FRR)
Power Source:	100 V, 50/60 Hz, 0.6 A (From Copier)
Dimensions (W x H x D):	835 mm x 425 mm x 640 mm (32.9") (16.7") (26.7")
Weight:	55 kg (1211b)

## 2. PAPER SIZE AND END DETECTION



Paper size is detected by an array of five photointerrupters [A] in the cassette entrance. The paper size sensors are actuated by a plate on the front of the cassette. Each paper size has its own unique combination of notches in the actuator plate [B]. The CPU reads which photointerrupters have been de-actuated (0 V to 5 V) by the actuator plate to determine which paper size has been inserted.

When a cassette runs out of paper, the paper end feeler [C] drops through a slot [D] in the cassette bottom plate. The paper end actuator [E], which is on the same shaft as the paper end feeler, pivots into the detector (photointerrupter) [F]. The detector then provides a HIGH signal to the CPU informing it that the cassette is empty.

The Add Paper indicator then turns on, the Start key turns red, and the machine stops after the copy is finished.

**Actuator Plate Combination Table**

Paper Size	Sensor No.	Operation Panel Indication	
	1 2 3 4 5	220 V	115 V
A3	1 0 0 0 0	A3	*
B4	1 1 0 0 0	B4	*
A4 sideways	0 0 1 0 0	A4	*
A4 lengthwise	1 0 1 0 0	A4R	*
B5 sideways	0 1 1 0 0	u32	*
B5 lengthwise	1 1 1 0 0	*	*
A5 sideways	0 0 0 1 0	u32	*
A5 lengthwise	1 0 0 1 0	u32	*
B6 sideways	0 1 0 1 0	u32	*
B6 lengthwise	1 1 0 1 0	u32	*
Return Post Card	0 0 1 1 0	u32	*
Post Card	0 0 1 1 0	u32	*
11" x 17"	0 0 0 0 1	*	11" x 17"
11" x 8 $\frac{1}{2}$ "	1 0 0 0 1	*	11" x 8 $\frac{1}{2}$ "
11" x 15"	0 1 0 0 1	*	11" x 15"
10" x 14"	1 1 0 0 1	*	*
8 $\frac{1}{2}$ " x 14"	0 0 1 0 1	*	8 $\frac{1}{2}$ " x 14"
8 $\frac{1}{2}$ " x 13"	1 0 1 0 1	F4	*
8 $\frac{1}{2}$ " x 11"	0 1 1 0 1	*	8 $\frac{1}{2}$ " x 11" R
8 $\frac{1}{2}$ " x 5 $\frac{1}{2}$ "	1 1 1 0 1	u32	8 $\frac{1}{2}$ " x 5 $\frac{1}{2}$ "
8 $\frac{1}{2}$ " x 13" (14")	0 0 0 1 1	*	*
8" x 13" (14")	1 0 0 1 1	F	*
8" x 10 $\frac{1}{2}$ "	0 1 0 1 1	*	*
8" x 10"	1 1 0 1 1	*	*
5 $\frac{1}{2}$ " x 8 $\frac{1}{2}$ "	0 0 1 1 1	*	5 $\frac{1}{2}$ " x 8 $\frac{1}{2}$ "
No Cassette	1 1 1 1 1	*	*

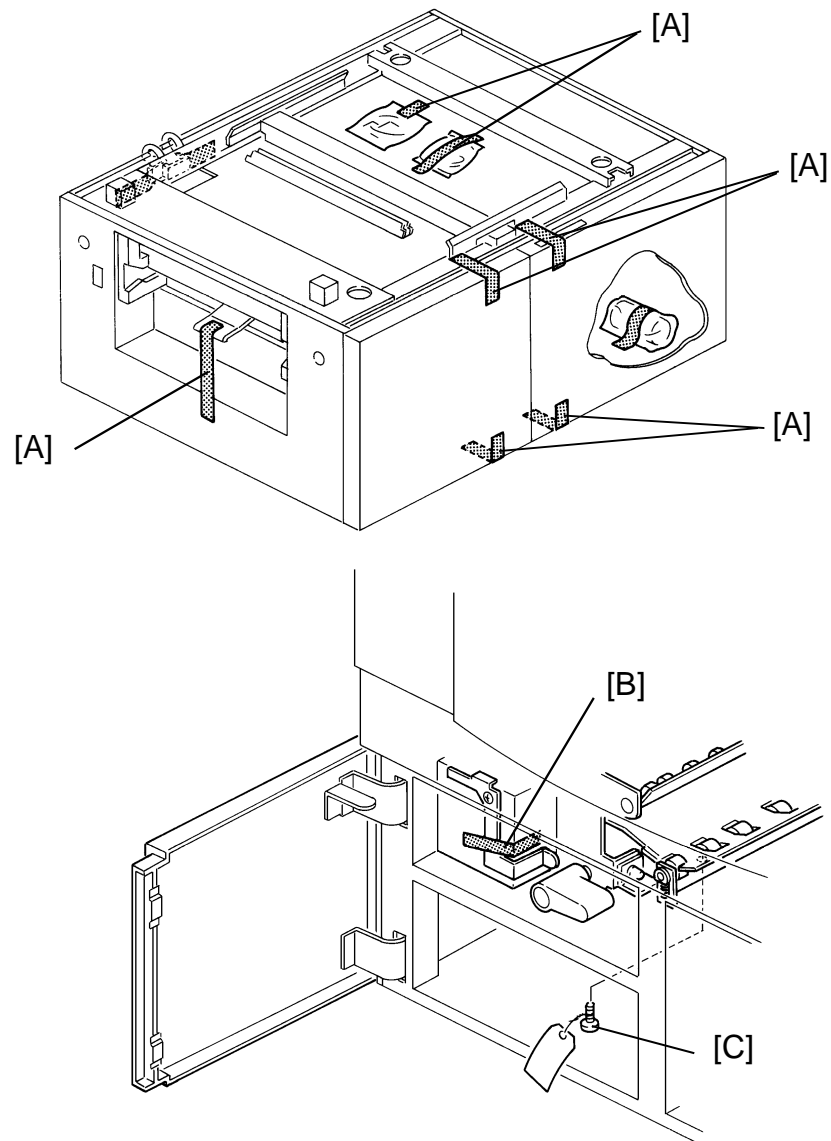
1: Not interrupted (Low)

0: Interrupted (High)

**ACCESSORY CHECK**

Check the quantity and condition of the accessories in the box according to the following list:

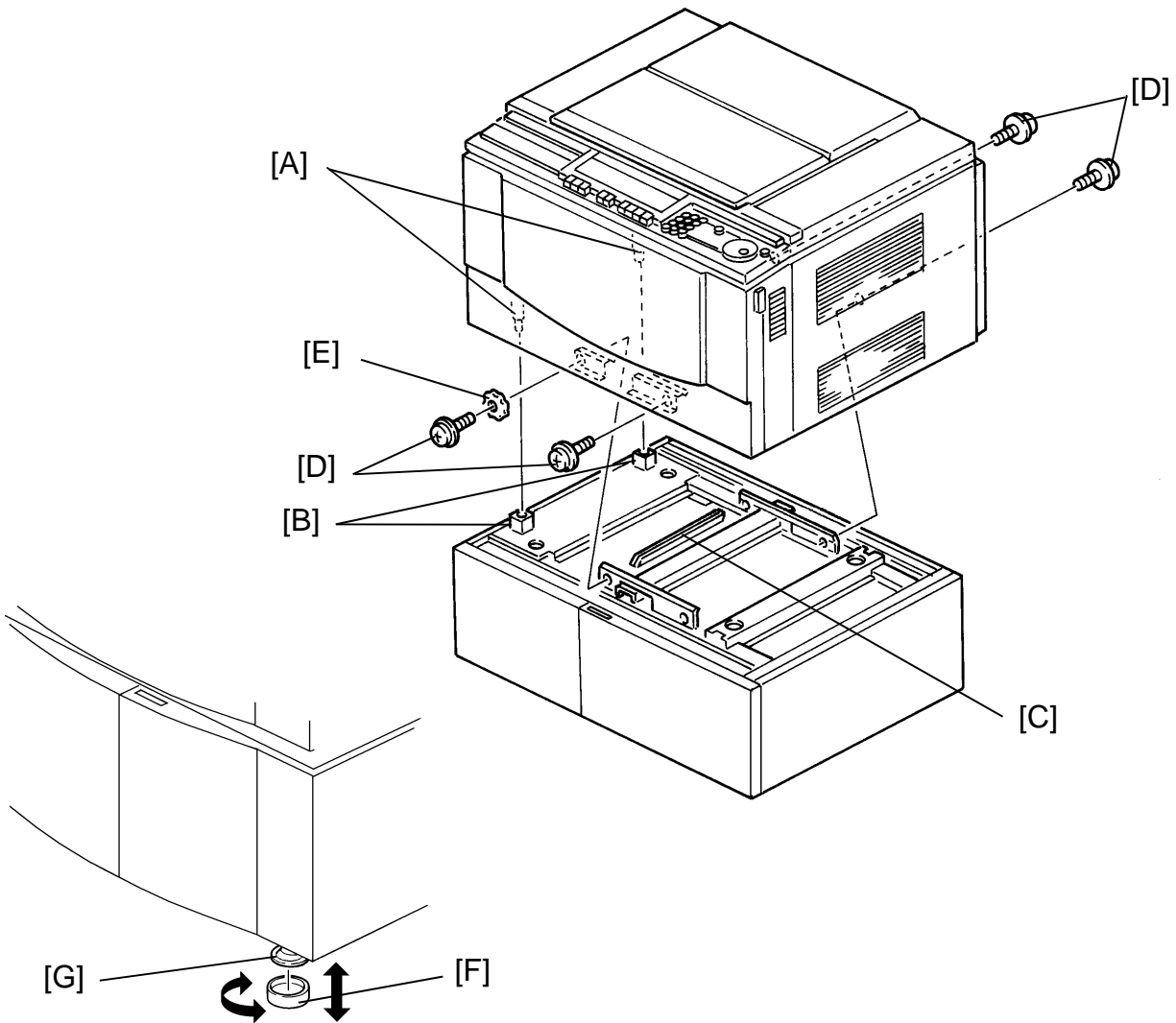
- 1. Installation Procedure .....1
- 2. Idle Gear .....1
- 3. Harness Bracket .....1
- 4. Grounding Screw .....4
- 5. Screw .....1
- 6. Washer.....1
- 7. New Equipment Condition Report (17 and 27 machines) .....1
- 8. Envelop for NECR (17 machine only).....1
- 9. Multilingual Decal (16, 25, 26 and 27 machines).....1



## INSTALLATION PROCEDURE

**NOTE:** Turn off the main switch and remove the plug.

1. Remove all external strips of tape [A].
2. Open the right and left doors, and remove the strips of tape [B] and the screw [C].



3. Place the copier on the paper feed unit aligning the positioning pins [A] of the copier with the positioning holes [B] of the paper feed unit.

**NOTE:** a) Take care that the paper bank harness does not get caught between the copier and the table during positioning.

b) Take care not to damage the entrance guide plate [C].

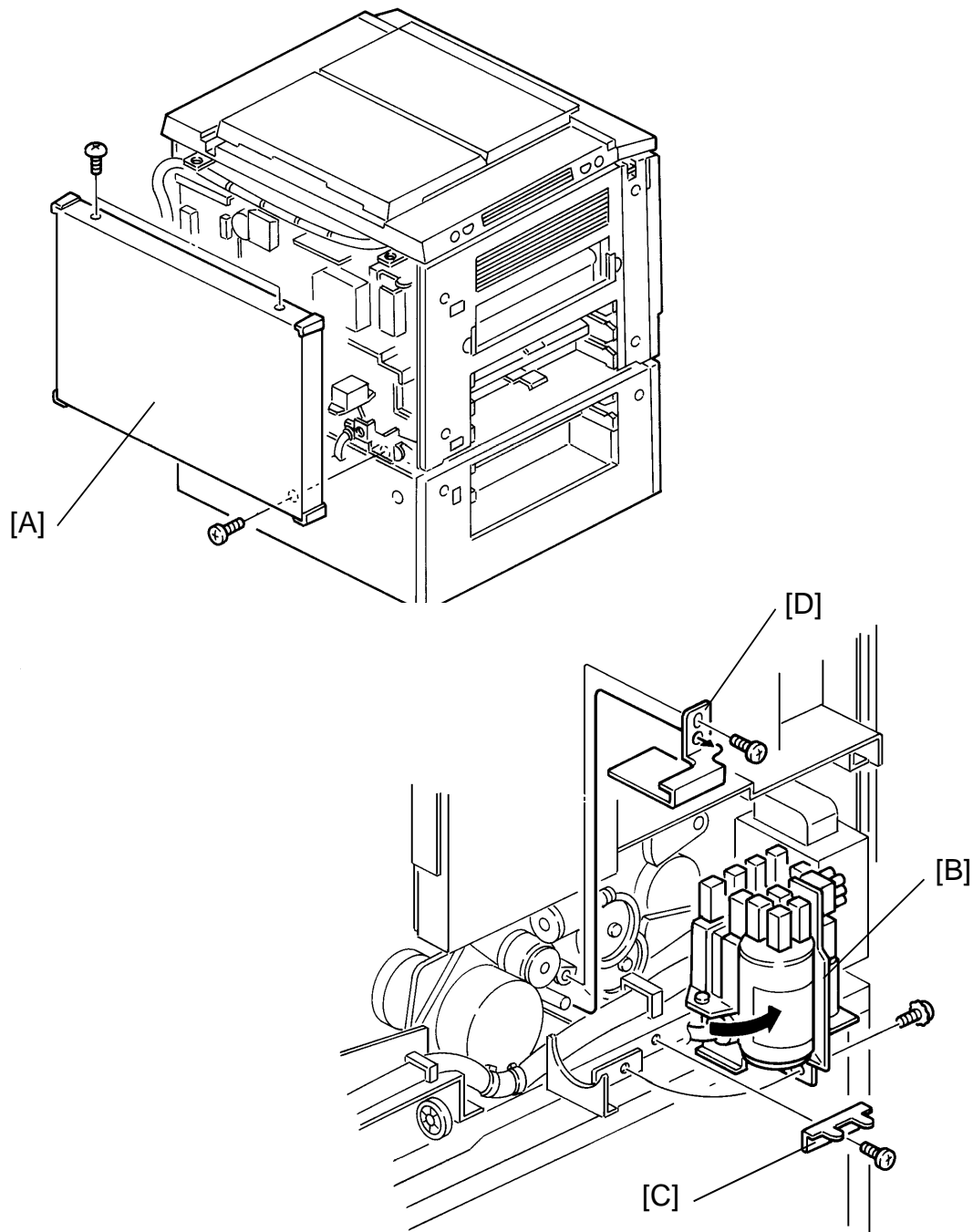
4. Secure the copier to the paper feed unit as shown (4 grounding screws [D], 1 washer [E]).

5. Place the four leveling shoes [F] under the leveling feet [G] and screw the leveling feet up or down to level the machine.

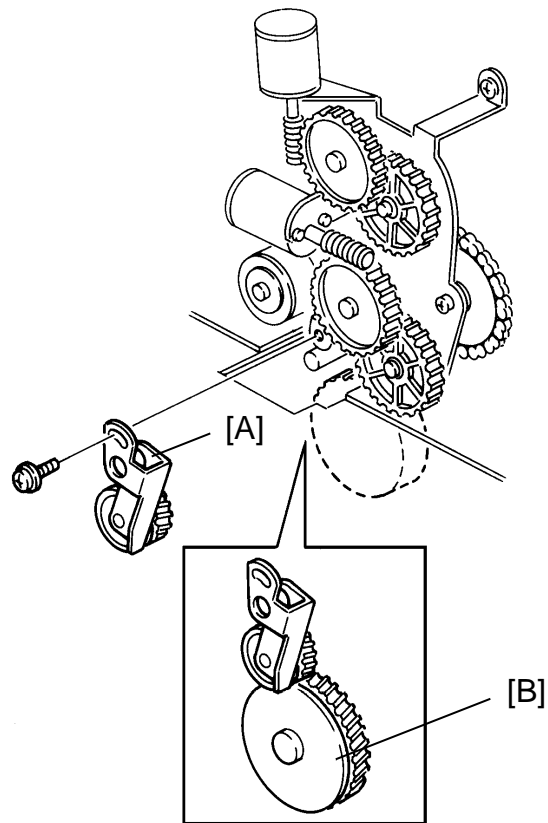
**NOTE:** Set a carpenter's level on the exposure glass.

1. Front to back      Within 5 mm (0.2") of level

2. Right to left      Within 5 mm (0.2") of level

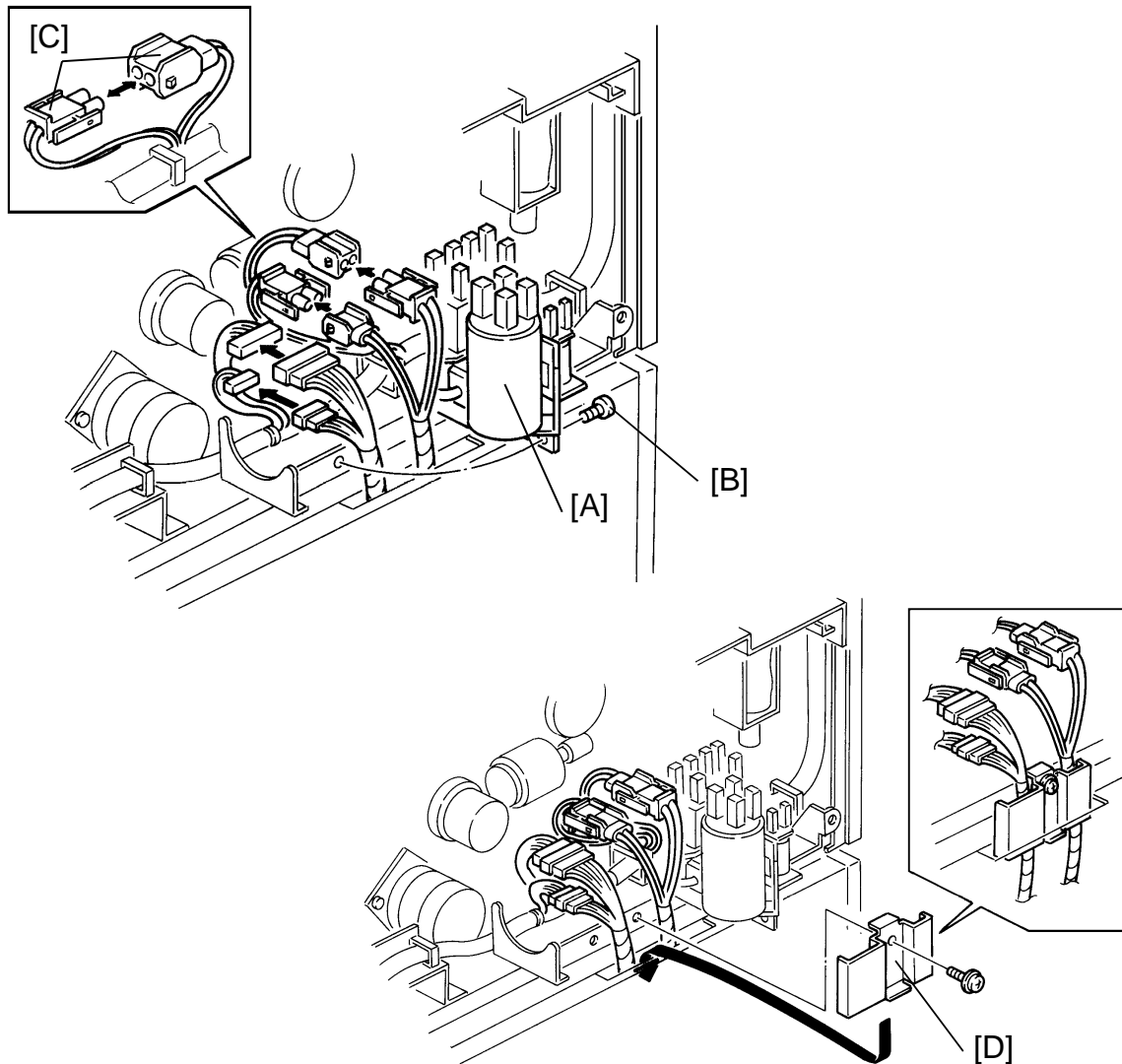


6. Remove the copier rear cover [A] (3 screws).
7. Open the power supply section [B] (1 grounding screw).
8. Remove the securing bracket [C] (1 screw) and the cover bracket [D] (1 screw).



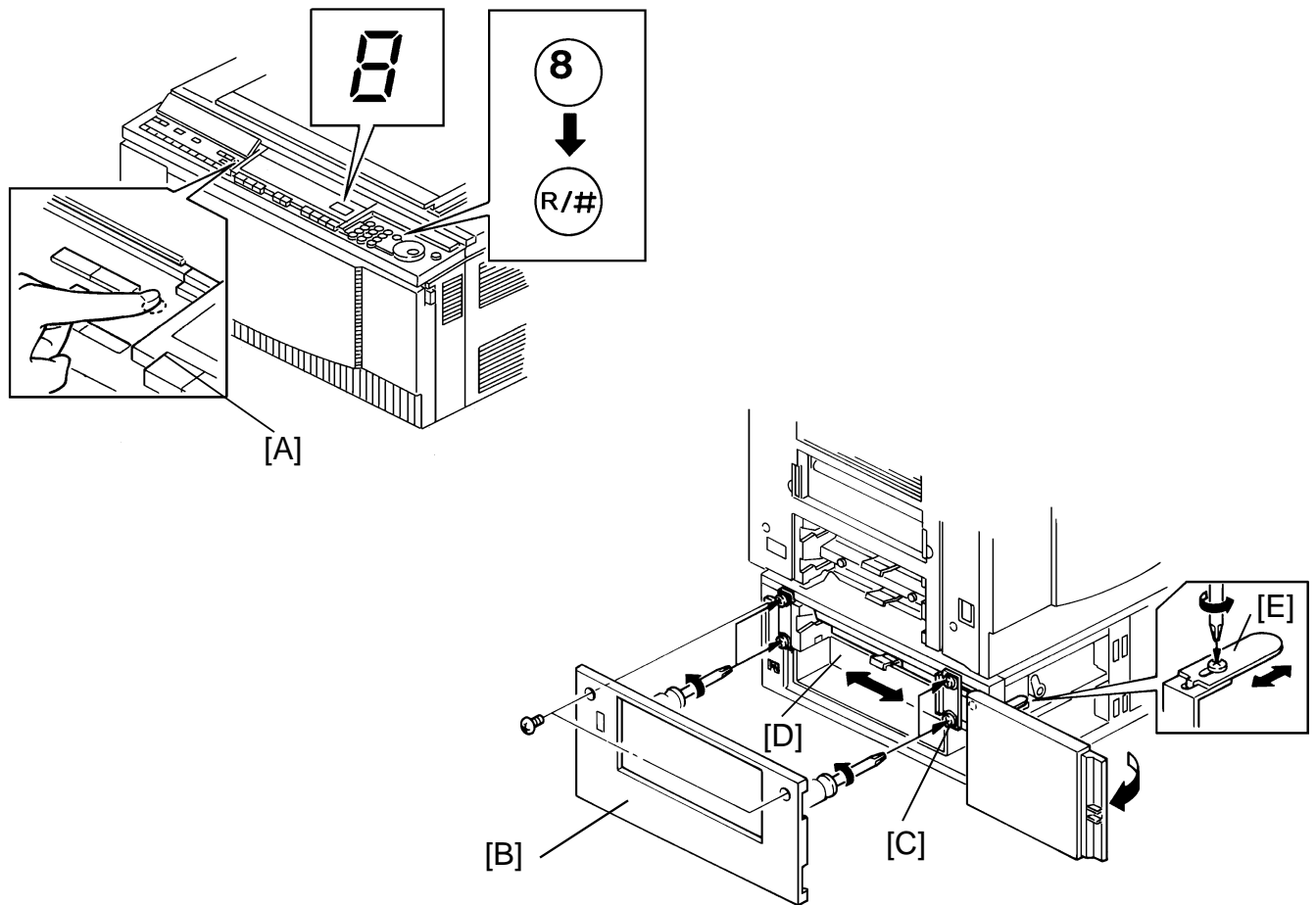
9. Pull the copier left lift handle and install the idle gear [A] (1 screw) as shown.
10. Fix the idle gear so that it contacts the black gear [B].





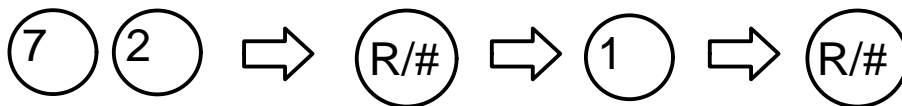
**CAUTION: When closing the power supply section [A], use the grounding screw [B] (#6) for proper grounding.**

11. Disconnect the connector [C].
12. Connect the paper feed unit harness to the copier harness as shown.
13. Install the harness bracket [D] using the screw removed in #8 as shown.
14. Reinstall the power supply section (1 grounding screw).
15. Reinstall the copier rear cover.



17. Plug in the copier and turn on the main switch. After warming up, enter the SP mode as follows: while pressing the SP mode [A] and "8" keys, press the enter key.

18. Enter the 3rd paper feed operation mode as follows:



19. Exit SP mode by pressing the Clear Modes key.

20. To adjust the horizontal registration of the 3rd paper feed section:

- 1) Compare the copy from the 1st paper feed section with that from the 3rd paper feed section.
- 2) Remove the left cover [B] of the 3rd paper feed unit (2 screws).
- 3) Loosen the 4 screws [C] of the paper feed unit [D].
- 4) Move the paper feed unit and actuator [E] the same amount that it was adjusted.
- 5) Reassemble all parts.